



Specifications

Specifications

Engine

Maker/Model	Kirloskar4R1040T		
Rated flywheel horse power	ISO3046 (Gross)	105HP@ 2200rpm	
Max Torque	37.5@ 1500rpm		

Hydraulic System

Main pump	
Type	Two variable displacement piston pumps
Max. flow	2x112 lpm
Sub-pump for pilot circuit	Gear pump
Cross-sensing & fuel saving pump system	

Hydraulic motors

Travel	Two speed axial piston motor with brake valve and parking brake
Swing	Axial piston motor with automatic brake

Relief valve settings

Implement Circuit	330kgf/cm ²
Travel	330kgf/cm ²
Swing Circuit	285kgf/cm ²
Pilot Circuit	40kgf/cm ²
Service valve	Installed

Coolant & Lubricant Capacity

REFILLING	LITER
Fuel tank	270
Engine coolant	15.5
Engine oil	11.5
Swing device	2.5
Final drive (each)	3
Hydraulic system / Hydraulic tank	210 / 124

Drives & Brakes

Drive method	Fully hydrostatic type
Drive motor	Axial piston motor in-shoe design
Reduction system	Planetary reduction gear
Traction Force	13300 kgf (130KN)
Max.travel speed (high/low)	5.5kmph/3.2kmph
Gradeability	35 Degree (70%)
Parking brake	Multi wet disc

Undercarriage

X-leg type centre frame is integrally welded with reinforced box section track frames. The under carriage includes lubricated rollers, idlers, track adjusters with shock absorbing spring and sprockets and trackchain with triple grouse shoes.

Centre frame	X-leg type
Track frame	Pentagonal box type
No. of shoes on each side	46
No. of carrier rollers each side	1
No. of track rollers, each side	7
No. of rail guard each side	1

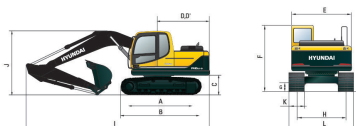
Swing System

Swing motor	Axial piston motor
Swing reduction	Planetary gear reduction
Swing bearing lubrication	Grease bathed
Swing brake	Multi wet disc
Swing speed	12.0 rpm

Operating Weight

Shoe Width mm (in)	Operating weight kg (lb)	Ground pressure kgf/cm ²
500 mm (20")	13,300 (29,321)	0.34

Dimensions (mm)

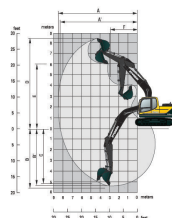


A Tumbler distance	3000
B Overall distance of crawler	3750
C Ground clearance counter weight	940
D Tail swing radius	2330
D' Rear end length	2330
E Overall width of upper structure	2600
F Overall weight of the cab.	2860
G Min. ground clearance	440
H Track Gauge	2000
I Overall length	7850
J Overall height of boom	2760
K Track shoe width	500
L Overall width	2500

Working Ranges (mm)

Arm length (std.)	+2100	Boom length (std.)	4600
-------------------	-------	--------------------	------

A Maximum Digging Reach	7920		
A' Digging Reach on Ground	7770		
B Max Digging Depth	5150		
B' Max. Digging Depth (8' level)	4900		
C Vertical Digging Depth	4900		
D Maximum Digging Height	8100		
E Maximum Dumping Height	5750		
F Minimum Swing Radius	2670	Bucket Digging Force	10400 kgf
Arm Crowd Force	7900	Arm Crowd Force	7900 kgf



R140LC-9V SMART

OPERATING WEIGHT : 13300 kgs

GROSS POWER : 105 HP @ 2200 rpm

BUCKET CAPACITY: 0.65 - 0.72m³



Hyundai Construction Equipment India Pvt. Ltd.

Factory Location

Plot No. A-2, M.I.D.C. Chakan, Phase II,
Village: Khalumbre, Taluka: Khed, Dist: Pune-410501
E mail: hyundai.care@theconnectionsindia.com
Toll Free No.: 1800 209 8600

Please Contact

Scan the QR code
with your phone
camera & visit
our website



JUNE 2021

MOVING YOU FURTHER

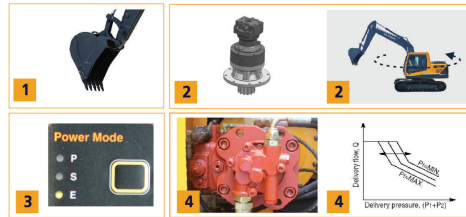
*Design, aesthetics and features may vary from actual

R140LC-9V SMART FEATURES AND SPECIFICATIONS



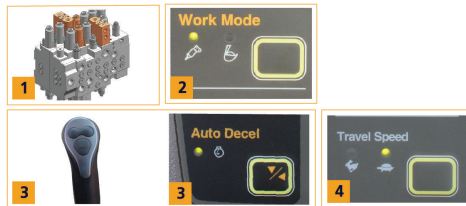
PRODUCTIVITY

1. Optimized bucket option - 0.72GP/0.65HD
2. Swing priority function
3. Mode options to optimize power
4. Power control through CAPO system



EFFICIENCY

1. Advanced main control valve
2. Exclusive breaker mode
3. One touch idle & Auto deceleration function
4. Dual travel speed for faster response



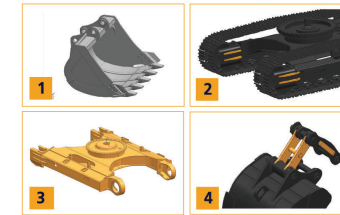
OPERATOR CONVENIENCE

1. Biggest in class cabin (AC optional)
2. SMART digital colour display
3. Seat with multiple adjustments
4. Cabin Lights for better visibility



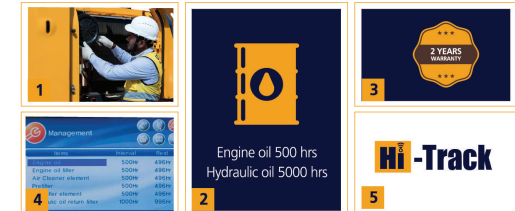
STRUCTURE & DURABILITY

1. Reinforced front attachment
2. Reinforced idler area for high durability
3. Strong X-frame
4. Bucket link Reinforcement



SERVICEABILITY

1. Easy Serviceability
2. Engine oil upto 500hrs and hydraulic oil upto 5000hrs
3. Extended machine warranty for 2 years / 5000 hrs*
4. Maintenance management system
5. Hi-Track (RMS)



SAFETY

1. Boom and arm holding system
2. Anti-restart System to avoid accidental damage
3. Auto warning during machine malfunction
4. Inbuilt self-diagnostic function
5. Safety lever to ensure safeguarding against machine movement.
6. Battery disconnect switch



*Terms & Conditions applicable