

# R130 **SMART**

OPERATING WEIGHT: 12100 kgs

GROSS POWER : 94 HP @ 1950 rpm

BUCKET CAPACITY: 0.45 - 0.65m<sup>3</sup>



# R130 **SMART**

## BEST-IN CLASS PERFORMANCE

- Advanced CAPO system
- 3 power mode
- Regeneration system
- Excellent digging forces



## OPERATOR COMFORT

- Spacious AC cabin
- Fully adjustable seat
- Sunvisor & 12V socket **New!**
- User friendly digital cluster



## IMPROVED FUEL EFFICIENCY

- Electro hydraulic system
- Dual Deceleration system **New!**
- Efficient breaker mode



# DESIGNED FOR SMART WORK



## Increased Machine Durability

- Strengthened undercarriage
- Rugged upper structure
- Durable components
- Heavy duty front attachment



## Simplified Maintenance

- Easy serviceability
- Extended maintenance
- Large capacity fluid tank
- Low life cycle cost



## Parts & Support

- Hyundai genuine parts
- Max parts availability
- On-site product support



# Performance

## IMPROVED PERFORMANCE

The well-matched combination of the Kirloskar engine with CAPO system has resulted in an unbeatable Hydraulic Excavator that offers great Performance.



## ENGINE

The 94 HP, Kirloskar engine coupled with proven electro hydraulic system and intelligent CAPO system ensures optimum utilization of power and increased fuel efficiency.





# R130 **SMART**



## ADVANCE HYDRAULIC SYSTEM

Hydraulic pressure sensing system provides wide range of flow at various workloads. Open center Main Control Valve (MCV) ensures faster response and maximum efficiency. Travel & swing motor provides excellent mobility and faster cycle time

## CHOICE OF OPERATING MODE

Working Mode	Advantage
<b>H Mode</b>	<ul style="list-style-type: none"><li>• Uses 100% engine power for mass production</li></ul>
<b>S Mode</b>	<ul style="list-style-type: none"><li>• Uses 85% engine power for all work</li></ul>
<b>L Mode</b>	<ul style="list-style-type: none"><li>• Uses 70% of engine power for reduced fuel consumption</li></ul>
<b>Breaker Mode</b>	<ul style="list-style-type: none"><li>• Sets pump flow to optimal level and boosts efficiency</li></ul>

## EFFICIENT COMBINED OPERATION

Inbuild flow summation system and **Swing priority** function leads to faster swing cycle results in excellent output

## BEST IN CLASS DIGGING FORCES

Higher output even in tough working condition

- **Bucket - 9200 kgf**
- **Arm - 6410 kgf**



## TOP-CLASS TRAVEL PERFORMANCE

- Higher traction force
- Dual travel option
- High maneuverability

**Drawbar Pull - 10400 kgf**



# Fuel Efficiency



## IMPROVED FUEL EFFICIENCY

New MCV, Improved MCU with auto deceleration function, Advanced CAPO system, Power & working mode options results in excellent fuel efficiency



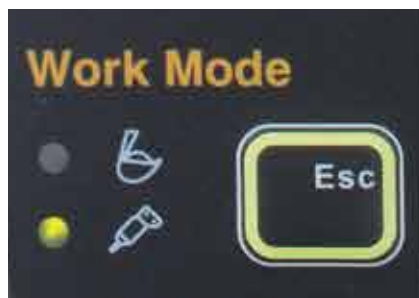
## ARM REGENERATION SYSTEM

- Smooth operation
- Prevent cavitation
- Increased performance & fuel efficiency



## ONE TOUCH IDLE & AUTO DECELERATION

Prevents fuel losses by reducing engine rpm during no-load condition



## EXCLUSIVE BREAKER MODE

Excellent fuel saving due to exclusive power for breaker operation



# Operator Comfort

## EXCELLENT VISIBILITY

360 degree visibility, fully open sunroof, ergonomic controls, adjustable fully suspension seat, air conditioning system (Opt) ensure comfortable, safe working environment.



## MODERN INSTRUMENT PANEL

- Hydraulic oil temperature
- Fuel level
- Engine oil temperature
- 12 warning indicators
- Self diagnostic
- Maintenance management

**NEW**



POWER SOCKET

**NEW**



SUNVISOR



RUBBER COATED TRAVEL PEDAL



CABIN TOP LIGHT



MUSIC SYSTEM



10 STAGE RPM DIAL



## AIR CONDITIONING SYSTEM (OPTIONAL)

- 9 air ducts
- Advanced AC console
- Allround air circulation

## OPERATOR SEAT

Easily adjustable Full suspension seat with adjustable arm rest

## SMOOTH LEVER CONTROLS

Ergonomically placed lever controls reduces fatigue over long working hours.

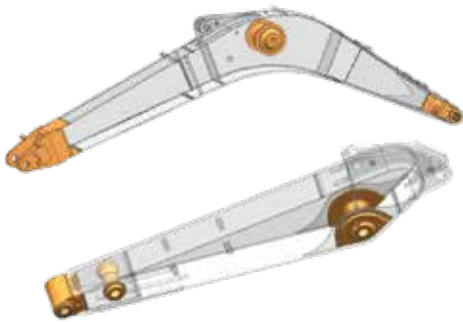
## SPACIOUS CABIN

More head room, large space, large door for easy entry and exit





# Reliability



## REINFORCED FRONT STRUCTURE

Use of specialized advance steel plates and reinforced design for higher strength and durability

- Thicker plates
- Casted component
- Internal baffle plate
- Added wear plates on arm
- Reinforced bucket

## RUGGED UNDERCARRIAGE

X frame provides excellent resistance to torsional bending to enhance structure life



**TRACK GUIDES** : Reinforced track guide on each side of track

**BELLY GUARD** : Protects rotary joint and hydraulic hoses from external damage

**REINFORCED IDLER GUIDE AREA** : Prevents deformation caused by impact of loose stones

**CASTED IDLER** : The track spring and the casted idler have been joined directly to achieve optimum structural integrity



## BALANCED SWING SYSTEM

Swing gear uses a ball bearing to absorb radial and thrust load



## RELIABLE ELECTRICALS

- Dust and water proof connectors
- Longer component life



## LONG LIFE STRUCTURE

Tank cover & air breather safety guard protects from external damages.

The reinforced upper structure and lower frame are build to withstand tougher working conditions and contribute towards a well-balanced & solid machine while operating in adverse terrains.

Reinforced front attachment supports excellent bucket digging and arm crowd force.





# Serviceability

## EXTENDED MAINTENANCE INTERVAL

Enhanced filtration system extends hydraulic life upto 5000 hrs and Engine oil life upto 500 hrs, which reduces the maintenance cost

CHANGE INTERVAL	
Hydraulic oil	5000 hrs
Hydraulic filter	1000 hrs
Engine oil	500 hrs
Engine Filter	500 hrs

## MAINTENANCE MANAGEMENT



## LARGE LCD MONITOR

Operator can check the machine's vital signs without any difficulties

- **Maintenance Management**  
Proactive maintenance
- **Self Diagnostic**  
Reduces down time
- **Warning Indicator**  
Ensures safe working

## SELF DIAGNOSTIC SYSTEM



## AIR PRE-CLEANER

The large capacity air cleaner removes 99% of airborne particles, reducing the risk of engine contamination. Reliability is improved by a new radial seal design.

## EASY ACCESSIBILITY

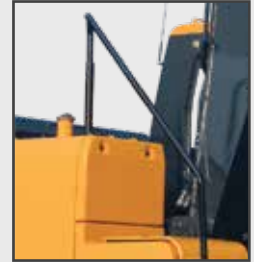
Hyundai's SMART machines feature helps easy service access to increase machine uptime and reduces maintenance cost



# Safety

## SAFETY - MORE THAN A PEACE OF MIND AND CONFIDENCE

Cabin is integrally welded using high strength steel to provide enhanced protection. Handrails and steps are provided for easy operation. Anti-slip pads provide safety against skidding while climbing machine.



### COUNTER BALANCE VALVE

Works as a hydrostatic brake and prevents machine against accidental roll down in steep gradients.



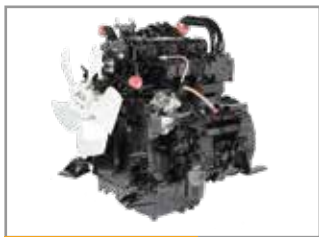
### BOOM & ARM HOLDING SYSTEM

Prevent attachments from drifting against gravity due to prolonged overhanging.



### ANTI RESTART FUNCTION

Prevents starter from damage during engine operation



**AUTO ENGINE OVERHEAT & WARM UP FUNCTION**



**BATTERY DISCONNECT SWITCH**



**ENGINE FAN GUARD**



**SLIP RESISTANT STICKES**



# Parts & Support

## HYUNDAI GENUINE PARTS

Developed in synergy with our machines, Hyundai parts and lubricants ensure that you get the high levels of performance, reliability and safety that come with the complete Hyundai experience.

Enjoy the confidence and assurance of the most stringent testing procedures and the high quality manufacturing processes safeguarding your machine's health. Experience the versatility of our 200+ strong outlet network across India

### WHY RISK IT?

Maximize profits and extend your machine's life.



## BENEFITS OF USING GENUINE HYUNDAI PARTS AND LUBRICANTS

- Genuine Hyundai Parts meet strict specifications and standards in Chemistry, Microstructure and Tensile Strength.
- Benefit from the continuous improvements and advancements made by Hyundai's technical team
- Improved performance of hydraulics and engine components
- Enjoy greater productivity with higher uptime
- Higher resale values
- Reduced oil consumption and unexpected breakdowns
- Enhanced component life





# Specifications

## Engine

<b>Maker/Model</b>		Kirloskar 4R1040T	
Rated flywheel horse power	SAE	J1995 (Gross)	94 HP (70.1 KW) @1,950 rpm
		J1349 (Net)	91 HP (67.9 KW) @1,950 rpm
<b>Max Torque</b>		36.5 kgf.m (264 lbf.FT) @1,550 rpm	

## Hydraulic System

<b>Main pump</b>	
Type	Two variable displacement piston pumps
Max. flow	2 x 112 lpm
Sub-pump for pilot circuit	Gear pump
Cross-sensing & fuel saving pump system	
<b>Hydraulic motors</b>	
Travel	Two speed axial piston motor with counter balance valve and pairing brake
Swing	Axial piston motor with automatic brake
<b>Relief valve settings</b>	
Implement circuits	330kgf/cm <sup>2</sup>
Travel	330kgf/cm <sup>2</sup>
Swing Circuit	240 kgf/cm <sup>2</sup>
Pilot Circuit	35 kgf/cm <sup>2</sup>
Service valve	Installed

## Coolant & Lubricant Capacity

REFILLING	LITRE
Fuel tank	250
Engine coolant	20
Engine oil	11.5
Swing device	2.5
Final drive (each)	2.5
Hydraulic system / Hydraulic tank	180 / 100

## Drives & Brakes

Drive method	Fully hydrostatic type
Drive motor	Axial piston motor in-shoe design
Reduction system	Planetary reduction gear
Max. drawbar pull	10400 kgf
Max. travel speed (high/low)	5.5 kmph /3.4 kmph
Gradeability	35 Degree (70%)
Parking brake	Multi wet disc

## Undercarriage

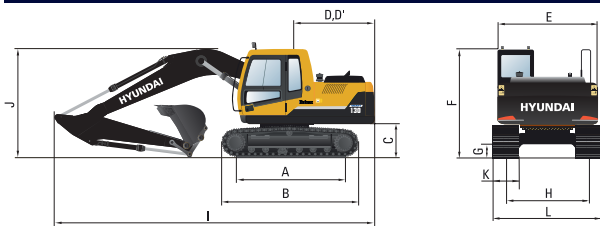
X-Leg type centre frame is integrally welded with reinforced box section track frames. The undercarriage includes lubricated rollers, idlers, track adjusters with shock absorbing spring and sprockets, and track chain with triple grouse shoes.

Centre frame	X-leg type
Track frame	Pentagonal box type
No. of shoes on each side	41
No. of carrier rollers each side	1
No. of track rollers. each side	6
No. of rail guard on each side	1

## Swing System

Swing motor	Axial piston motor
Swing reduction	Planetary gear reduction
Swing bearing lubrication	Grease bathed
Swing brake	Multi wet disc
Swing speed	12 rpm

## Swing System



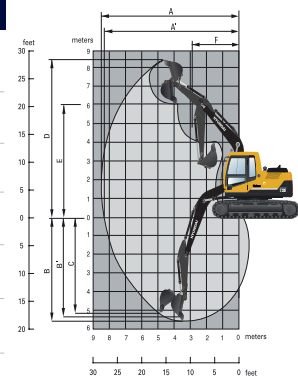
## Dimensions

	mm
A Tumbler distance	2610
B Overall length of crawler	3340
C Grand clearance of counterweight	900
D Tall swing radius	2130
D' Rear-end length	2110
E Overall width of upperstructure	2475
F Overall height of cab	2800
G Min ground clearance	440
H Track gauge	1990
I Overall length of crawler	7240
J Overall height of boom	2550
K Track Shoe Width	500
L Overall Width	2490

## Working Ranges

<b>Boom length (std.)</b>	<b>4300</b>
<b>Arm length (std.)</b>	<b>1960</b>

A	Maximun Digging Reach	7460
A'	Digging Reach on Ground	7320
B	Max Digging Depth	4770
B'	Max- Digging Depth (8' level)	4510
C	Vertical Wall Digging Depth	4070
D	Maximum Digging Height	7900
E	Maximum Dumping Height	5540
F	Minimum Swing Radius	2340





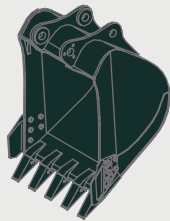


# Specifications

## BUCKETS

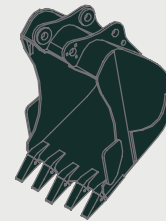
All buckets are welded with high-strength steel.

### GENERAL PURPOSE



\*0.65m<sup>3</sup> SAE heaped bucket

### HEAVY DUTY



0.45m<sup>3</sup> SAE heaped bucket

Capacity m <sup>3</sup> (yd <sup>3</sup> )		Width mm (in)		Weight. kg (lb)	Recommendation mm (ft -in)	
SAE heaped	CECE heaped	Without side cutters	With side cutters		4.3m (14' 1") Boom	
					1.9m (6' 5") Arm	2.2m (7' 5") Arm
* 0.65m <sup>3</sup> (0.85yd <sup>3</sup> )	0.52m <sup>3</sup> (0.68yd <sup>3</sup> )	1020mm (40.2")	1130mm (44.5")	525 kg (1155 lb)	●	●
◎ 0.45m <sup>3</sup> (0.93yd <sup>3</sup> )	0.40m <sup>3</sup> (0.52yd <sup>3</sup> )	830mm (32.7")	940 (37.0")	490 kg (1080 lb)	■	▲

\* : Standard backhoe bucket  
◎ : Heavy Duty bucket

● Applicable for materials with density of 2,000 kg/m<sup>3</sup> (3,370lb yd<sup>3</sup>) or less  
■ Applicable for materials with density of 1,600 kg/m<sup>3</sup> (2,700 lb/yd<sup>3</sup>) or less  
▲ Applicable for materials with density of 1,100 kg/m<sup>3</sup> (1,850lb yd<sup>3</sup>) or less

## ATTACHMENT

Boom and arm are of all-welded full-box section design. 4.3m (14' 4") mono boom and 1.96 m (6'5"), 2.26m (7' 5") Arm is available. Buckets are all-welded, high-strength steel implements.

Arm	Length Weight	mm (ft.in) kg (lb)	1,960 (6' 5")	2,260 (7' 5")
			320 (710)	340 (750)
Bucket digging force	SAE	kN	78.5	78.5
		kgf	8,000	8,000
		lbf	17,640	17,640
	ISO	kN	90.2	90.2
		kgf	9,200	9,200
		lbf	20,280	20,280
Arm crowd force	SAE	kN	60.2	55.7
		kgf	6,140	5,680
		lbf	13,540	12,520
	ISO	kN	62.9	58.1
		kgf	6,410	5,920
		lbf	14,130	13,050

\*: Standard Arm (Arm weight including cylinder and linkage)



# Lifting Capacities

## LIFTING CAPACITIES R130 SMART



Rating over-front



Rating over-side

- Boom: 4.3m (14'1") • Arm: 1.96m (6'5") • Bucket: 0.65m<sup>3</sup> SAE Heaped
- 1600kg Counterweight

Load point height m (ft)		Load radius								At max. reach		
		1.5 m (5.0 ft)		3 m (10.0 ft)		4.5 m (15.0 ft)		6.0 m (20 ft)		Capacity		Reach m (ft)
6.0m (20ft)	kg					*1730	*1730			*1770	*1670	5.62 (18.4)
	lb					*3810	*3810			*3900	3680	
4.5m (15.0ft)	kg					*1900	*1900			1570	1140	6.62 (21.7)
	lb					*4190	*4190			3460	2510	
3.0m (10.0ft)	kg			*3110	*3110	*2360	2350	*1830	1340	1310	930	7.10 (23.3)
	lb			*6860	*6860	*5220	5180	*4030	2950	2890	2050	
1.5m (5.0ft)	kg			*4890	4110	2890	2110	1740	1250	1240	870	7.18 (23.6)
	lb			*10780	9060	6370	4650	3840	2760	2730	1920	
Ground Line	kg			5440	4750	2700	1940	1660	1180	1320	920	6.89 (22.6)
	lb			11990	8270	5950	4280	3660	3660	2910	2030	
-1.5m (-5.0ft)	kg	*6140	*6140	5390	3700	2630	1870			1630	1160	6.15 (20.2)
	lb	*13540	*13540	11880	8160	5800	4120			3590	2560	
-3.0m (-10.0ft)	kg	*9120	*9120	*5020	3830	2710	1940					
	lb	*20110	*20110	*11070	8440	5910	4280					

1. Lifting capacity is based on SAE J1097, ISO 10567.
2. Lifting capacity of the Robex Series does not exceed 75% of the tipping load with the machine on firm, level ground or 87% of full hydraulic capacity.
3. The load point is a hook (standard equipment) located on the back of the bucket.
4. (\*) indicates the load limited by hydraulic capacity.





# Standard / Optional List

## Standard Equipment

### ISO standard cabin

All-weather steel cab with all-around visibility  
Safety glass windows  
Sliding fold-in front window  
Sliding side window  
Lockable door  
Accessory box & Ashtray

### Computer Aided Power Optimization (New CAPO) system

3-power mode, 2-work mode  
Auto deceleration & one touch deceleration system  
Auto engine overheat prevention system  
Self diagnostic system  
Centralized monitoring  
Fuel level gauge  
Engine coolant temperature gauge  
Hyd. oil temperature gauge

### Warning

Fuel level  
CPU  
Engine oil pressure  
Engine coolant temperature  
Hyd. oil temperature  
Low battery  
Air cleaner clogging  
Tool kit  
Door and cab locks, one key  
One outside rearview mirror  
Fully adjustable suspension seat  
Slidable joystick. pilot-operated  
Two front working lights and one cabin work lights  
Electric horn  
Batteries (2 x 12V x 80 AH)  
Battery master switch  
Rear open window  
Removable clean out screen for oil cooler  
Automatic swing brake  
Removable reservoir tank

Fuel pre-filter  
Boom holding system  
Arm holding system  
Counter weight (1600kg)  
Standard bucket (0.65m<sup>3</sup>, 0.85yd<sup>3</sup>)  
Mono boom (4.3m, 14' 1")  
Arm (1.96m, 6' 5")  
Track shoes (500mm)  
Track rail guard  
Radio / USB player  
Operator kit  
Sun visor for cabin inside  
12V power outlet (24V DC to 12 V DC converter)

## Optional Equipment

Beacon lamp  
Single acting piping kit  
Quick coupler  
Accumulator, work equipment lowering  
Cabin front protector

### Optional Arms (SAE heaped)

Arm (2.2 m)

### Various optional Buckets (SAE heaped)

Heavy Duty bucket (0.45 m<sup>3</sup>, 0.59 yd<sup>3</sup>)

Air-conditioner (5000kcal/hr, 20000 BTU/hr)





**HYUNDAI**  
**CONSTRUCTION EQUIPMENT**  
**INDIA**

E mail: [hyundai.care@theconnectionsindia.com](mailto:hyundai.care@theconnectionsindia.com)  
Tel.No.: 02135 301700  
Toll Free No.: 1800 209 8600

[www.hyundaiindia.net](http://www.hyundaiindia.net) [@hceindia](https://www.instagram.com/hceindia)  
[@hyceindia](https://www.facebook.com/hyundaiindia.net/) [/hyundaiindia.net/](https://www.facebook.com/hyundaiindia.net/)  
Hyundai Construction Equipment India Pvt Ltd

Plot No. A-2, M.I.D.C. Chakan, Phase II,  
Village: Khalumbre, Taluka: Khed, Dist: Pune-410501