

ENGINE	STD	OPT
Hyundai HM8.3 Engine	●	
HYDRAULIC SYSTEM	STD	OPT
Intelligent Power Control (IPC)		
3-power mode, 2-work mode, user mode	●	
Variable power control	●	
Pump flow control	●	
Attachment mode flow control		●
Engine auto idle	●	
Engine auto shutdown control		●
CAB & INTERIOR	STD	OPT
ISO Standard Cabin		
Rise-up type windshield wiper	●	
Radio / USB player	●	
Handsfree mobile phone system with USB	●	
12 V power outlet (24 V DC to 12 V DC converter)	●	
Electric horn	●	
All-weather steel cab with 360° visibility	●	
Safety glass windows	●	
Sliding fold-in front window	●	
Sliding side window (LH)	●	
Lockable door	●	
Hot & Cool box	●	
Storage compartment & Ashtray	●	
Sun visor	●	
Door and cab locks, one key	●	
Pilot-operated slidable joystick	●	
Cabin lights		●
Cabin front window rain guard		●
Cabin roof-steel cover	●	
Automatic Climate Control		
Air conditioner & Heater	●	
Defroster	●	
Starting aid (air grid heater) for cold weather	●	
Centralized Monitoring		
8" LCD display - Normal type	●	
8" LCD display - Premium type		●
Engine speed or trip meter / Accel	●	
Engine coolant temperature gauge	●	
Max power	●	
Low speed / High speed	●	
Auto idle	●	
Overload	●	
Check engine	●	
Air cleaner clogging	●	
Indicators	●	
ECO gauges	●	
Fuel level gauge	●	
Hyd. oil temperature gauge	●	
Warnings	●	
Communication error	●	
Low battery	●	
Clock	●	
Seat		
Mechanical suspension without heater	●	
Mechanical suspension with heater		●
Adjustable air suspension without heater		●
Adjustable air suspension with heater		●
Cabin FOPS		
FOPS (Falling object protective structures)ISO 10262 Level 2		●
FOG (Falling object guard) Front & Tops guard		●
ISO 10262 Level 2 Top guard		●
Cabin ROPS		
ROPS (Roll over protective structures)ISO 12117-2		●

SAFETY	STD	OPT
Battery master switch	●	
Rearview camera		●
AAVM (Advanced around view monitoring)		●
Six front working lights (4 boom mounted, 2 front frame mounted)	●	
Travel alarm	●	
Rear work lamp		●
Beacon lamp		●
Automatic swing brake	●	
Boom holding system	●	
Arm holding system	●	
Safety lock valve for boom cylinder with overload warning device		●
Safety lock valve for arm cylinder		●
Swing Lock system		●
Two outside rearview mirror	●	

OTHER

OTHER	STD	OPT
Booms		
6.45 m, 21' 2" Mono	●	
6.15 m, 20' 2" Mono		●
Arms		
2.2 m, 7' 3"		●
2.5 m, 8' 2"		●
3.2 m, 10' 6"	●	
Removable clean-out dust net for cooler	●	
Removable washer tank	●	
Fuel pre-filter	●	
Fuel warmer		●
Self-diagnostics system	●	
Hi-mate (Remote management system)		●
Batteries (2 × 12 V × 150 AH)	●	
Fuel filler pump (50 #/min)		●
Single-acting piping kit (Breaker, etc.)		●
Double-acting piping kit (Clamshell, etc.)		●
Quick coupler piping		●
Quick coupler		●
Accumulator for lowering work equipment	●	
Fine swing control system		●
General type guardrail		●
Tool kit		●

UNDERCARRIAGE

UNDERCARRIAGE	STD	OPT
Lower frame under cover (Additional)		●
Lower frame under cover (Normal)	●	
Track Shoes		
Triple grousers shoes (600 mm, 24")	●	

* Standard and optional equipment may vary. Contact your hyundai dealer for more information.
 The machine may vary according to international standards.
 * The photos may include attachments and optional equipment that are not available in your area.
 * Materials and specifications are subject to change without advance notice.
 * All imperial measurements rounded off to the nearest pound or inch.



Hyundai Construction Equipment India Pvt. Ltd.
 Plot No. A-2, M. I. D. C. Chakan, Phase II,
 Village: Khalumbre, Taluka: Khed, Dist: Pune - 410501
 E mail: hyundai.care@theconnectionsindia.com
 Tel.No.: 02135 301700 Fax No: 02135 301712 Toll Free No.: 1800 209 8600
 www.hyundaiindia.net @hceindia f/hyundaiindia.net/
 @hyceindia Hyundai Construction Equipment India Pvt Ltd

PLEASE CONTACT

www.hyundai-ce.com

MOVING YOU FURTHER

HX360L

With Tier 2 / Stage II Engine Installed

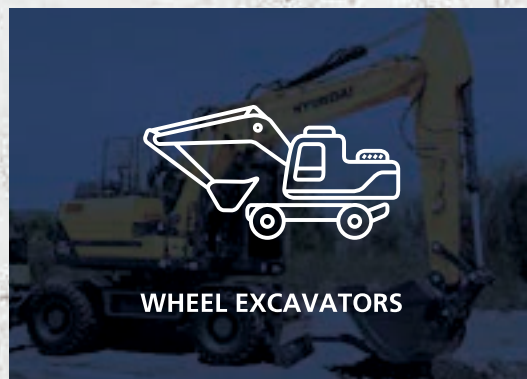
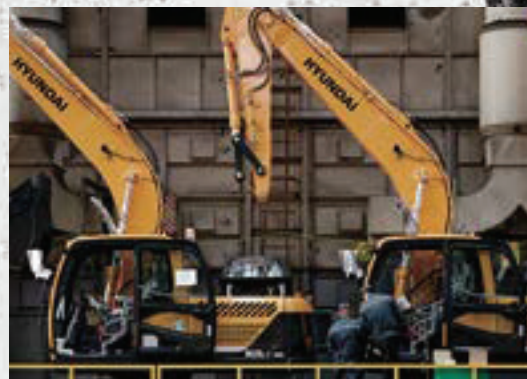


*Photo may include optional equipment.

Gross Power SAE J1955/250HP (186 kW) at 2,200rpm	Travel Speed 6.4km/hr(3.98mph)/3.6km/hr(2.11mph)	Operating Weight 35,050 kg
---	---	-------------------------------



The HX Series Excavators are products of HCE's spirit of initiative, creativity, and strong drive. HCE's engineers, who are the best in the industry, have worked tirelessly to offer a zero-defect product. The new HX Series reflects customers' needs in the field gleaned by thorough monitoring. They maximize fuel efficiency and performance proven by rigorous field tests and quality control.



*Photo may include optional equipment.

RULE THE GROUND

HX360L

The HX Series exceeds customer's expectation!
Become a true leader on the ground with HCE's HX Series.



WORK MAX, WORTH MAX

- New Variable Power Control
- Fuel Rate Information (Option)
- IPC (Intelligent Power Control)
- Attachment Flow Control (Option)
- ECO Gauge
- New Cooling System with Increased Air Flow
- Enlarged Air Inlet with Grill Cover
- Cycle Time Improvement



MORE RELIABLE, MORE SUSTAINABLE

- Durable Cooling Module
- Reinforced Pin, Bush, and Polymer Shim
- Reinforced Durability of Upper and Lower Structure and Attachments
- Wear Resistant Cover Plate
- Hi-grade (High-pressure) Hoses



INFOTAINMENT FRONTIER

- New Front Side Air Conditioning Systems
- Intelligent and Wide Cluster
- New Air Conditioning System
- Wi-Fi Direct with Smart Phone (Miracast) (Option)
- Proportional Auxiliary Hydraulic System (Option)
- Quick Coupler Button (Option)
- New Audio System



MODERN COMFORT, SIMPLE AND SAFE SOLUTION

- AAVM (Advanced Around View Monitoring) Camera System (Option)
- Hi-mate (Remote Management System) (Option)
- Cab Suspension Mount
- Swing Lock System (Option)
- Fine Swing Control (Option)



*Photo may include optional equipment.



*Photo may include optional equipment.

New Variable Power Control

The HX Series minimizes equipment input and output control signals to improve fuel efficiency. Its three-stage power mode ensures the highest performance in any operating environment.



* P (power) mode : Maximizes speed and power of the equipment for heavy load work.



* S (standard) mode : Optimizes performance and fuel efficiency of the equipment for general load work.



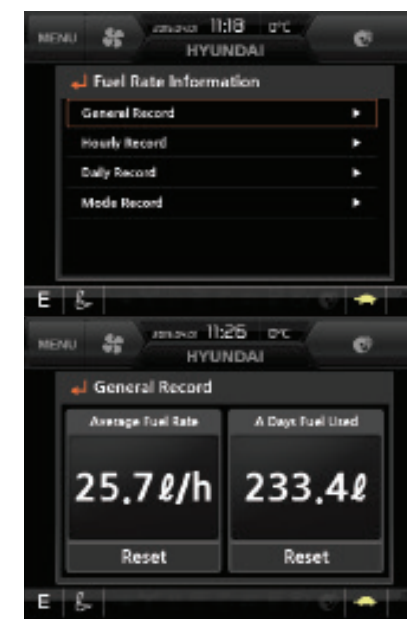
* E (economy) mode : Improves the control system for light load work.

WORK MAX, WORTH MAX

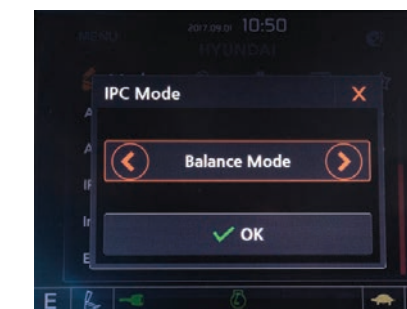
Fuel Efficient System, Allows Great Performance

The HX Series has an eco-friendly, high-performance engine which ensures both excellent fuel efficiency and high power. With outstanding operating performance proven by rigorous tests at various work sites, it will satisfy any customer's needs.

15% increased greater screen from 7 to 8 inch is applied in HX Series. More functions and better resolution are available with adding premium options.



Fuel Rate Information (Option)



IPC (Intelligent Power Control)

The IPC controls power depending on work environments. Its mode can be selected and released on the monitor. On the excavation mode, pump flow can be easily controlled by a lever, reducing fuel consumption.



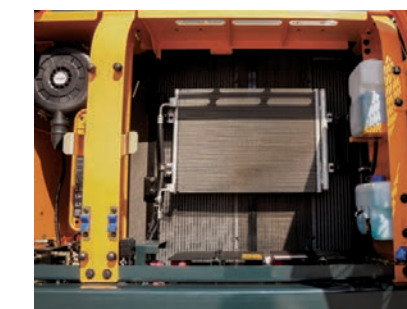
Attachment Flow Control (Option)

The HX Series improves pump flow rate by independent control of two pumps. It optimizes attachments for effective flow rate setting depending on attachments (ten breaker types and ten crusher types), enabling various operations matching the site environments.



Eco Gauge

Eco gauge enables economic operation of machines. The gauge level and color displays engine torque and fuel efficiency level. On top of that, the status of fuel consumption such as average rate and the total amount of fuel consumed is displayed. Hourly and daily based fuel consumption can be checked in the detailed menu as well.



New Cooling System with Increased Air Flow

With the cooling module improving air inflow, the HX Series provides excellent cooling performance by increasing heat dissipation.



Enlarged Air Inlet with Grill Cover

Enlarged vent hole of the air inlet side cover and fine net grill to prevent penetration of foreign materials further improve durability.

Cycle Time Improvement

The HX Series provides higher productivity on the site by faster operation: it loads trucks up to 10% faster and levels up to 16% faster than the 9S Series.

MORE RELIABLE, MORE SUSTAINABLE

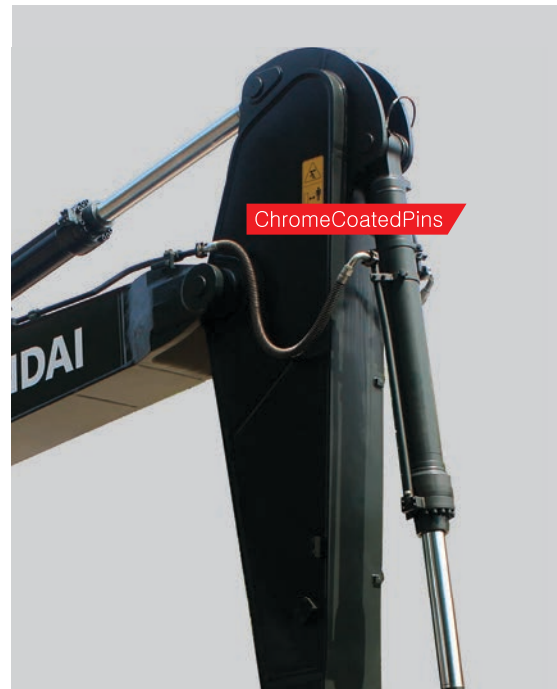
New Exterior Design for Robustness and Safety

The true value of the HX Series lies in its durability. The robust frame structure and the attachments show the real value of the HX Series in tough working environments and promise higher productivity.



Durable Cooling Module

The HX Series has a durable cooling module that passed stringent tests, demonstrating the highest productivity in tough working environments.



ChromeCoatedPins

Reinforced Pin, Bush, and Polymer Shim

The HX Series improves lubricity of connecting parts between the equipment and attachments. Gaps with attachments are minimized by wear-resistant long-life pins, bushes, and polymer shims, supporting the highest performance with invariable durability.

Wear Resistant Cover Plate

A wear-resistant cover plate is installed at the end of the arm to minimize abrasion on the connector between the arm and the bucket. Vibration reduction of buckets enables more stable operation even in high-load work.



Reinforced Durability of Upper and Lower Structure and Attachments

The upper and lower structure and attachments of the HX Series have higher durability than demanded on the site, as proven through numerous tests including road tests and virtual simulation. The wear resistance of the bucket has been improved by use of new material.



*Photo may include optional equipment.

Hi-grade (High-pressure) Hoses

The HX Series uses high-pressure hoses with improved heat and pressure resistance, greatly increasing the durability of the equipment.



310 mm
(9S Series)

340 mm
(HX Series)

Cabin space for drivers increased by
13%
(Compared to 9S Series)

*Photo may include optional equipment.

INFOTAINMENT FRONTIER

Improved Instrument Panel for Easier Monitoring

Many electronic functions are concentrated in the most convenient spot for operators to improve work efficiency. The highly-advanced infotainment system, a product of HCE's intensive information technology development, enables both productivity and comfort while working! The HX Series is designed with the operator in mind.



Intelligent and Wide Cluster

The 8-inch interactive touchscreen display of the HX Series is 15% larger than that of the previous model. The centralized switches on the display allow the operator to check the urea level and the temperature outside the cab.



New Air Conditioning System

Front side Air Vent holes make operators more convenient and fresh through direct air flow to driver's face, foot and body.

Wi-Fi Direct with Smart Phone (Miracast) (Option)

The smart terminal-miracast system uses the Wi-fi from the operator's smart phone to easily and conveniently enable features of the smart phone, such as navigating, surfing the web, watching videos, and listening to music, on the 8" screen. (Currently only available for Android phones.)



Proportional Auxiliary Hydraulic System (Option)

Proportional control switch for better speed control
•Enlarge the operation convenience



Front Side Air-Vent

Quick Coupler Button (Option)

Easy attachment replacement of equipment is available with quick coupler button.

New Audio System

The radio player with a USB-based MP3 player, an integrated Bluetooth hands-free feature, and a built-in microphone allow for phone calls while at work and in transit. The radio player is conveniently located on the right side of the operator to allow for improved access.



New Front Side Air-conditioning System

The ventilation is designed for both warm and cool air reaching to operators' faces. It could help operators create more neat and enjoyable atmosphere through indoor air circulation.

MODERN COMFORT, SIMPLE AND SAFE SOLUTION

New Cabin for More Comfort

Low noise, low vibration, and ergonomic design make the cabin space more comfortable and pleasant! With focus on safety and convenience of operators, the HX Series allows rapid and safe equipment inspection anytime and anywhere, providing an optimal environment for operators to work.



AAVM (Advanced Around View Monitoring) Camera System (Option)

The HX Series has a state-of-the-art AAVM video camera system to secure field of vision for operators in all directions, thereby preventing accidents. Operators can easily check the workplace in the front and rear and to the right and left.



- * AVM (Around View Monitoring): Secure field of vision in all directions by nine views including 3D bird's eye view and 2D/4CH view.
- * IMOD (Intelligent Moving Object Detection): Inform when people or dangerous objects are detected within the range of operation (Recognition distance: 5m).

HiMATE

It's Convenient, Easy and Valuable

Hi-mate Hyundai's newly developed remote management system, utilizes GPS-satellite technology to provide customers with the highest level of service and product support available. Hi-mate enables users to remotely evaluate machine performance, access diagnostic information, and verify machine locations at the touch of a button.

What is benefits



Increase Productivity

It helps you operate machines in efficient. You can check the difference between total engine hours and actual working hours. See how productive your machines are and plan any required cost saving solutions. Hi MATE offers working information such as working / idling hours, fuel consumption and rate.



Convenient and Easy Monitoring

There is nothing much to do to monitor your machines. Just log on to the Hi MATE website or mobile application. Hi MATE allows you to watch your machines whenever and wherever you are.



Security

Protect your machines from theft or unauthorized usage with Hi MATE. If the machine moves out of the Geo-fence boundary, you will get alerts.

HiMATE

REMOTE MANAGEMENT SYSTEM

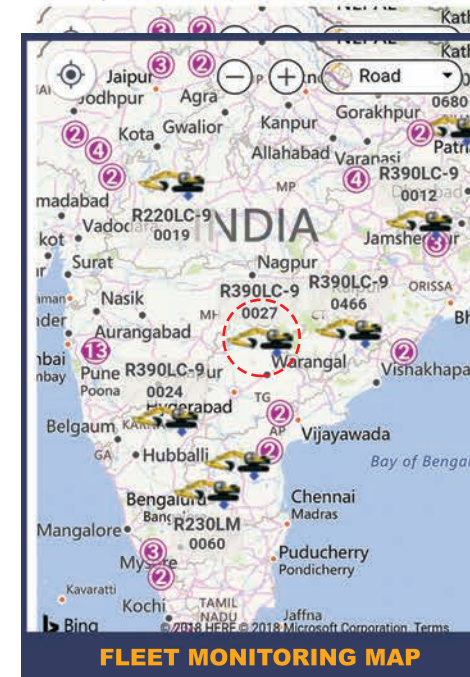
Our Unique remote management system allows customers to access machine operating information & obtain service & maintenance alerts at the touch of a button.

INCREASED PRODUCTIVITY

Hi MATE empowers you to enhance the efficiency of your operations. Make better decisions by comparing the machine's operating time with its travelling, idling & breaker use duration.

CONVENIENT & EASY MONITORING

Enjoy round the clock & on the move access to your machine's information through the website or the mobile app.



SECURITY & FLEET MONITORING

Protect your machines from theft or unauthorized use. Hi MATE's GPS feature allows you to create a geo-fence & alerts you if the machine moves out of the defined boundary.

Item	Maintenance Interval (h)	Default	Setting	Total	At the last maintenance	Remainder time to next maintenance (hr)	Alarm (alarm)
Engine Oil	500	62		22	838	28-Mar-2018	100
Travel Reduction Gear Case	1,000	300		0	400	15-Jan-2018	300
Swing Reduction Gear Case	1,000	200		0	400	15-Jan-2018	400
Hydraulic Oil	5,000	350		0	554	07-Feb-2018	96
Pilot Line Filter	1,000	220		0	540	02-Feb-2018	240
Hydraulic Tank Drain Filter	1,000	250		0	540	02-Feb-2018	210

PROACTIVE MAINTENANCE

Access your machine's service & maintenance history with the utmost convenience. Plan your service schedules intelligently with our regular reminders.

Date	Time	Hourmeter	Alarm Type	Alarm	Error Code (SPN+)	Description	Casebook
15-Apr-2018	07:16	510	W	303	(Warning) Fuel level low		
14-Apr-2018	17:36	509	W	303	(Warning) Fuel level low		
11-Apr-2018	11:23	491	W	303	(Warning) Fuel level low		
10-Apr-2018	07:14	484	W	706	(Warning) Battery Voltage low		
09-Apr-2018	07:41	479	W	303	(Warning) Fuel level low		
09-Apr-2018	06:58	479	W	303	(Warning) Fuel level low		
06-Apr-2018	11:34	469	W	313	(Warning) Engine Oil Pressure low		

ALARMS

Get notified of system alarms & protect your machine from critical faults & experience repairs.

*OPTIONAL EQUIPMENT



RECEIVE LIVE NOTIFICATION THROUGH SMS & HiMATE APPLICATION ALERTS

SPECIFICATIONS

ENGINE

Maker / Model	HYUNDAI HM8.3	
Type	Watercooled, 4-cylinder diesel, 6-cylinders in line, direct injection, turbocharged, charger air cooled, low emission	
Rated flywheel horse power	SAE J1995 (gross)	250 HP (186kW) at 2,200 rpm
	J1349 (net)	245 HP (183kW) at 2,200 rpm
Max. Power	265 HP (198kW) at 2,000 rpm	
Max. torque	124 kgfm (899 lbft) at 1,300 rpm	
Bore × Stroke	114 mm × 135 mm (4.49" × 5.31")	
Piston displacement	8,290 cc (506 cu in)	
Batteries	2 × 12 V × 150 Ah	
Starting motor	24 V × 7.2 kW	
Alternator	24 V × 90 A	

HYDRAULIC SYSTEM

MAIN PUMP	
Type	Variable displacement tandem axis piston pumps
Max. flow	2 × 306 l/min
Sub-pump for pilot circuit	Gear pump

Cross-sensing and fuel saving pump system.

HYDRAULIC MOTORS

Travel	Two speed axial pistons motor with brake valve and parking brake
Swing	Axial piston motor with automatic brake

RELIEF VALVE SETTING

Implement circuits	350 kgf/cm ² (4,980 psi)
Travel	350 kgf/cm ² (4,980 psi)
Powerboost (boom, arm, bucket)	380 kgf/cm ² (5,400 psi)
Swing circuit	300 kgf/cm ² (4,270 psi)
Pilot circuit	40 kgf/cm ² (570 psi)
Service valve	Installed

HYDRAULIC CYLINDERS

No. of cylinder bore X stroke	Boom: 2-Ø150 × 1,480 mm
	Arm: 1-Ø160 × 1,685 mm
	Bucket: 1-Ø140 × 1,285 mm

DRIVES & BRAKES

Drive method	Fully hydrostatic type
Drive motor	Axial piston motor, in-shoe design
Reduction system	Planetary reduction gear
Max. drawbar pull	29,500 kgf (65,030 lbf)
Max. travel speed (high / low)	6.4km/hr (3.98mph)/3.6km/hr(2.11mph)
Gradeability	35° (70%)
Parking brake	Multi wet disc

CONTROL

Pilot pressure operated joysticks and pedals with detachable lever provide almost effortless and fatigueless operation.

Pilot control	Two joysticks with one safety lever (LH): Swing and arm, (RH): Boom and bucket (ISO)
Traveling and steering	Two levers with pedals
Engine throttle	Electric, dial type

SWING SYSTEM

Swing motor	Fixed displacement axial piston motor
Swing reduction	Planetary gear reduction
Swing bearing lubrication	Grease-bathed
Swing brake	Multi wet disc
Swing speed	11.2 rpm

COOLANT & LUBRICANT CAPACITY

	liter
Fuel tank	600
Engine coolant	25
Engine oil	26.5
Swing device	11
Final drive (each)	8.0 (7.8)
Hydraulic system (including tank)	414
Hydraulic tank	210

UNDERCARRIAGE

The X-leg type center frame is integrally welded with reinforced box-section track frames. The undercarriage includes lubricated rollers, idlers, track adjusters with shock absorbers, springs and sprockets, and a track chain with triple grouser shoes.

Center frame	X-leg type
Track frame	Pentagonal box type
No. of shoes on each side	48 EA
No. of carrier roller on each side	2 EA
No. of track roller on each side	9 EA
No. of rail guard on each side	2 EA

OPERATING WEIGHT (APPROXIMATE)

Operating weight, including 6,450 mm (21' 2") boom, 2.5mts (10' 6") arm, SAE heaped 1.44 m³ (1.88 yd³) bucket, lubricant, coolant, full fuel tank, full hydraulic tank, and all standard equipments.

OPERATING WEIGHT

Shoes		Operating weight		Ground pressure
Type	Width mm	kg (lb)		kgf/cm ² (psi)
Triple grouser	600	HX360L 35,050(kg)		0.64 (9.03)

AIR CONDITIONING SYSTEM

The air condition system for the machine contains the fluorinated greenhouse gas with global warming potential of R134a. (Global warming potential : 1,430)
The system hold 0.8 kg refrigerant consisting of a CO₂ equivalent 1.14 kg metric tonne. For more information, please refer to the manual.

BUCKET SELECTION GUIDE & DIGGING FORCE

BUCKETS

All buckets are welded with high-strength steel.



SAE heaped m ³ (yd ³)	1.44	◆ 1.44	⊠ 1.44
	1.74		⊠ 1.60 (HD)
	2.10		⊠ 1.73 (HD)

Capacity m ³ (yd ³)	Width mm (in)	Weight kg (lb)	Tooth	Recommendation mm (ft-in)			
				6,150 (20' 2") Boom		6,450 (21' 2") Boom	
				2,200 (7' 3") Arm	2,200 (7' 3") Arm	2,500 (8' 2") Arm	3,200 (10' 6") Arm
2.10 (2.75)	1,800 (72.8")	1,650 (3,640)	6	■	■	■	▲
⊠ 1.44 (1.88)	1,250 (49.2")	1,470 (3,270)	5	●	●	●	○

◆ Heavy duty bucket

⊠ Rock-Heavy duty bucket

● : Applicable for materials with density of 2,100 kgf/m³ (3,500 lbf/yd³) or less

○ : Applicable for materials with density of 1,800 kgf/m³ (3,000 lbf/yd³) or less

■ : Applicable for materials with density of 1,500 kgf/m³ (2,500 lbf/yd³) or less

▲ : Applicable for materials with density of 1,200 kgf/m³ (2,000 lbf/yd³) or less

ATTACHMENT

Booms and arms are welded with a low-stress, full-box section design. 6.15m, 6.45m Booms and 2.2m, 2.5m

DIGGING FORCE

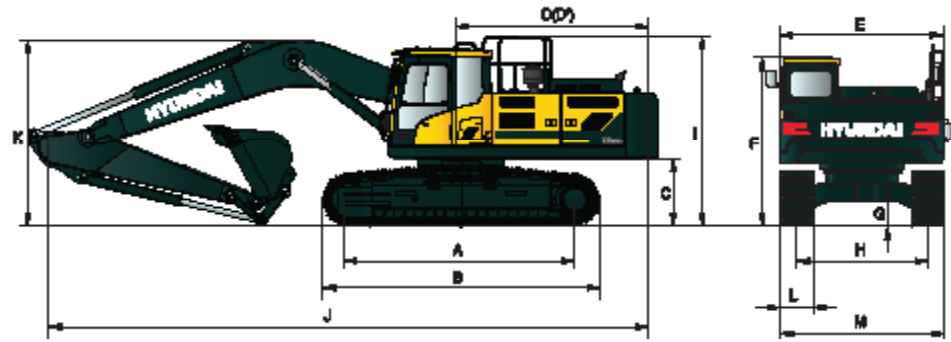
Boom	Length	mm (ft-in)	6,150 (20' 2")		6,450 (21' 2")		Remark
			Weight kg (lb)	2,950 (6,500)	3,030 (6,680)		
Arm	Length	mm (ft-in)	2,200 (7' 3")	2,200 (7' 3")	2,500 (8' 2")	3,200 (10' 6")	
Bucket digging force	SAE	kN	186.3 [203.3]	186.3 [203.3]	187.3 [204.4]	188.3 [205.5]	[] : Power Boost
		kgf	19,000 [20,730]	19,000 [20,730]	19,100 [20,840]	19,200 [20,950]	
		lbf	41,890 [45,700]	41,890 [45,700]	42,110 [45,940]	42,330 [46,190]	
	ISO	kN	214.8 [234.3]	214.8 [234.3]	215.7 [235.4]	216.7 [236.4]	
		kgf	21,900 [23,890]	21,900 [23,890]	22,000 [24,000]	22,100 [24,110]	
		lbf	48,280 [52,670]	48,280 [52,670]	48,500 [52,910]	48,720 [53,150]	
Arm crowd force	SAE	kN	195.2 [212.9]	195.2 [212.9]	175.5 [191.5]	140.2 [153.0]	
		kgf	19,900 [21,710]	19,900 [21,710]	17,900 [19,530]	14,300 [15,600]	
		lbf	43,870 [47,860]	43,870 [47,860]	39,460 [43,060]	31,530 [34,390]	
	ISO	kN	205.0 [223.6]	205.0 [223.6]	184.4 [201.1]	145.1 [158.4]	
		kgf	20,900 [22,800]	20,900 [22,800]	18,800 [20,510]	14,800 [16,150]	
		lbf	46,080 [50,270]	46,080 [50,270]	41,450 [45,220]	32,630 [35,600]	

Note : Boom weight includes arm cylinder, piping, and pin
Arm weight includes bucket cylinder, linkage, and pin

DIMENSIONS & WORKING RANGE

HX360L DIMENSIONS

6.45 m (21' 2"), 6.15 m (20' 2") BOOM and 2.2 m (7' 3"), 2.5 m (8' 2")

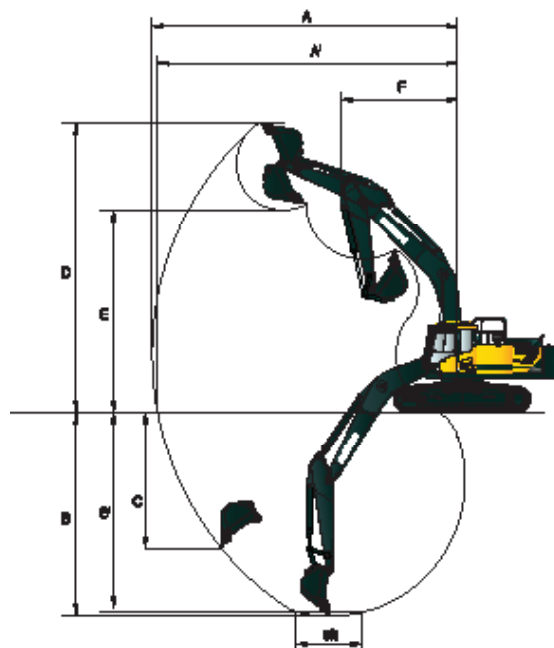


Unit : mm (ftin)

A Tumbler distance	4,030 (13' 3")
B Overall length of crawler	4,940 (16' 2")
C Ground clearance of counterweight	1,200 (3' 11")
D Tail swing radius	3,570 (11' 9")
D' Rear-end length	3,510 (11' 6")
E Overall width of upperstructure	2,980 (9' 9")
F Overall height of cab	3,145 (10' 4")
G Min. ground clearance	500 (1' 8")
H Track gauge	2,680 (8' 10")
I Overall height of guardrail (Opt)	3,350 (11' 0")

Boom length	6,150 (20' 2")	6,450 (21' 2")		
Arm length	2,200 (7' 3")	2,200 (7' 3")	2,500 (8' 2")	3,200 (10' 6")
J Overall length	11,160 (36' 7")	11,460 (37' 7")	11,340 (37' 2")	11,220 (36' 10")
K Overall height of boom	3,670 (12' 0")	3,630 (11' 11")	3,540 (11' 7")	3,360 (11' 0")
L Track shoe width	600 (24")	700 (28")		
M Overall width HX330SL	3,280 (10' 9")	3,380 (11' 1")		

HX360L WORKING RANGE



Unit : mm (ftin)

Boom length	6,150 (20' 2")	6,450 (21' 2")			
Arm length	2,200 (7' 3")	2,200 (7' 3")	2,500 (8' 2")	3,200 (10' 6")	4,050 (13' 3")
A Max. digging reach	10,020 (32' 10")	10,330 (33' 11")	10,500 (34' 5")	11,150 (36' 7")	11,950 (39' 2")
A' Max. digging reach on ground	9,810 (32' 2")	10,120 (33' 2")	10,290 (33' 9")	10,950 (35' 11")	11,770 (38' 7")
B Max. digging depth	6,150 (20' 2")	6,360 (20' 10")	6,660 (21' 10")	7,360 (24' 2")	8,210 (26' 11")
B' Max. digging depth (8' level)	5,950 (19' 6")	6,170 (20' 3")	6,450 (21' 2")	7,200 (23' 7")	8,080 (26' 6")
C Max. vertical wall digging depth	5,700 (18' 8")	5,970 (19' 7")	5,660 (19' 5")	6,330 (20' 9")	7,240 (23' 9")
D Max. digging height	9,980 (32' 9")	10,260 (33' 8")	10,050 (33' 0")	10,360 (34' 0")	10,780 (35' 4")
E Max. dumping height	6,790 (22' 3")	7,060 (23' 2")	6,950 (22' 10")	7,260 (23' 10")	7,670 (25' 2")
F Min. swing radius	4,450 (14' 7")	4,630 (15' 2")	4,440 (14' 7")	4,360 (14' 4")	4,290 (14' 1")

LIFTING CAPACITY

👉 Dig over-front 🚩 Tipping over-side or 360 degree

HX360L

6.15 m (20' 2") boom, 2.2 m (7' 3") arm equipped with 600 mm (24") triple grouser shoe and 6,000kg (13,230 lb) counterweight.

Load point height m (ft)	Load radius										At max. reach	
	1.5m (4.9ft)		3.0m (9.8ft)		4.5m (14.8ft)		6.0m (19.7ft)		7.5m (24.6ft)		Capacity	Reach
	👉	🚩	👉	🚩	👉	🚩	👉	🚩	👉	🚩	kg (lb)	m (ft)
7.5 m (24.6ft)											*9,890 (21,800)	8,800 (20.7)
6.0 m (19.7ft)											*9,940 (21,910)	6,770 (24.2)
4.5 m (14.8ft)											*11,120 (24,520)	9,210 (26.2)
3.0 m (9.8ft)											9,690 (21,360)	6,480 (14,290)
1.5 m (4.9ft)											8,710 (19,200)	5,830 (12,850)
Ground Line											12,810 (28,240)	8,150 (17,970)
-1.5 m (-4.9ft)											9,170 (20,220)	6,010 (13,250)
-3.0 m (-9.8ft)											8,230 (18,140)	5,440 (11,990)
											9,150 (20,170)	6,010 (13,250)
											*10,680 (23,550)	7,360 (16,230)
											*12,350 (27,230)	8,310 (18,320)
											*18,500 (40,790)	12,460 (27,470)
											*21,230 (46,800)	*21,230 (46,800)
											*16,370 (36,090)	12,690 (27,980)
											*12,350 (27,230)	8,310 (18,320)

6.45 m (21' 2") boom, 2.2 m (7' 3") arm equipped with 600 mm (24") triple grouser shoe and 6,000kg (13,230 lb) counterweight.

Load point height m (ft)	Load radius										At max. reach	
	1.5m (4.9ft)		3.0m (9.8ft)		4.5m (14.8ft)		6.0m (19.7ft)		7.5m (24.6ft)		Capacity	Reach
	👉	🚩	👉	🚩	👉	🚩	👉	🚩	👉	🚩	kg (lb)	m (ft)
7.5 m (24.6ft)											*9,420 (20,770)	7,920 (22.0)
6.0 m (19.7ft)											*9,780 (21,560)	6,240 (25.3)
4.5 m (14.8ft)											*11,070 (24,410)	8,980 (19,800)
3.0 m (9.8ft)											*9,570 (21,100)	6,410 (14,130)
1.5 m (4.9ft)											9,190 (20,260)	6,550 (14,440)
Ground Line											8,120 (17,900)	5,420 (11,950)
-1.5 m (-4.9ft)											12,630 (27,840)	7,990 (17,610)
-3.0 m (-9.8ft)											12,630 (27,840)	7,990 (17,610)
-4.5 m (-14.8ft)											9,060 (19,970)	5,910 (13,030)
											8,480 (18,700)	5,560 (12,260)
											*18,120 (39,950)	12,280 (27,070)
											*20,410 (45,000)	*20,410 (45,000)
											*12,490 (27,540)	8,140 (17,950)
											*12,370 (27,270)	*12,370 (27,270)
											*9,550 (21,050)	*9,550 (21,050)



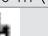




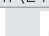
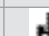

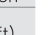

- Lifting capacity are based on ISO 10567.
- Lifting capacity of the Robex Series does not exceed 75% of tipping load with the machine on firm, level ground or 87% of full hydraulic capacity.
- The Lift-point is bucket pivot mounting pin on the arm(without bucket mass).
- (*) indicates load limited by hydraulic capacity.

LIFTING CAPACITY


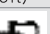
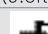





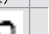

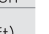

 Lifting over-front
  Lifting over-side or 360 degree

HX360L

6.45 m (21' 2") boom, 2.5 m (8' 2") arm equipped with 600 mm (24") triple grouser shoe and 6,000kg (13,230 lb) counterweight.

Load point height m (ft)	Load radius										At max. reach		
	1.5m (4.9ft)		3.0m (9.8ft)		4.5m (14.8ft)		6.0m (19.7ft)		7.5m (24.6ft)		Capacity	Reach	
													m (ft)
7.5 m (24.6ft)	kg										*8,820	7,570	6.93
	lb										*19,440	16,690	(22.7)
6.0 m (19.7ft)	kg					*9,310	*9,310	*8,740	6,590	*8,740	6,020		7.90
	lb					*20,530	*20,530	*19,270	14,530	*19,270	13,270		(25.9)
4.5 m (14.8ft)	kg			*13,730	*13,730	*10,630	9,020	*9,230	6,410	7,860	5,240		8.49
	lb			*30,270	*30,270	*23,440	19,890	*20,350	14,130	17,330	11,550		(27.9)
3.0 m (9.8ft)	kg					*12,200	8,520	9,360	6,180	7,330	4,860		8.79
	lb					*26,900	18,780	20,640	13,620	16,160	10,710		(28.8)
1.5 m (4.9ft)	kg					12,800	8,130	9,130	5,960	7,190	4,740		8.82
	lb					28,220	17,920	20,130	13,140	15,850	10,450		(28.9)
Ground Line	kg			*15,200	12,060	12,570	7,930	8,990	5,830	7,410	4,860		8.58
	lb			*33,510	26,590	27,710	17,480	19,820	12,850	16,340	10,710		(28.2)
-1.5 m (-4.9ft)	kg			*18,400	12,120	12,530	7,890	8,970	5,820	8,110	5,300		8.06
	lb			*40,570	26,720	27,620	17,390	19,780	12,830	17,880	11,680		(26.4)
-3.0 m (-9.8ft)	kg		*21,480	*21,480	*16,690	12,330	12,670	8,020		9,700	6,300		7.19
	lb		*47,360	*47,360	*36,800	27,180	27,930	17,680		21,380	13,890		(23.6)
-4.5 m (-14.8ft)	kg			*13,340	12,750					*10,060	8,800		5.80
	lb			*29,410	28,110					*22,180	19,400		(19.0)

6.45 m (21' 2") boom, 3.2 m (10' 6") arm equipped with 600 mm (24") triple grouser shoe and 6,000kg (13,230 lb) counterweight.

Load point height m (ft)	Load radius										At max. reach			
	1.5m (4.9ft)		3.0m (9.8ft)		4.5m (14.8ft)		6.0m (19.7ft)		7.5m (24.6ft)		9.0m (29.5ft)		Capacity	Reach
													m (ft)	
7.5 m (24.6ft)	kg							*6,830	6,770			*5,610	*5,610	7.74
	lb							*15,060	14,930			*12,370	*12,370	(25.4)
6.0 m (19.7ft)	kg							*7,870	6,710			*5,430	5,270	8.62
	lb							*17,350	14,790			*11,970	11,620	(28.3)
4.5 m (14.8ft)	kg			*11,980	*11,980	*9,660	9,210	*8,520	6,500	*6,670	4,820	*5,450	4,660	9.17
	lb			*26,410	*26,410	*21,300	20,300	*18,780	14,330	*14,700	10,630	*12,020	10,270	(30.1)
3.0 m (9.8ft)	kg			*15,550	13,250	*11,360	8,680	*9,400	6,240	7,090	4,700	*5,650	4,350	9.44
	lb			*34,280	29,210	*25,040	19,140	*20,720	13,760	15,630	10,360	*12,460	9,590	(31.0)
1.5 m (4.9ft)	kg			*17,440	12,390	*12,870	8,220	9,160	5,990	6,960	4,580	*6,050	4,240	9.47
	lb			*38,450	27,320	*28,370	18,120	20,190	13,210	15,340	10,100	*13,340	9,350	(31.1)
Ground Line	kg			*17,250	12,040	12,590	7,940	8,970	5,810	6,870	4,500	6,600	4,320	9.25
	lb			*38,030	26,540	27,760	17,500	19,780	12,810	15,150	9,920	14,550	9,520	(30.4)
-1.5 m (-4.9ft)	kg		*10,800	*10,800	*18,950	11,990	12,460	7,820	8,880	5,730		7,110	4,650	8.77
	lb		*23,810	*23,810	*41,780	26,430	27,470	17,240	19,580	12,630		15,670	10,250	(28.8)
-3.0 m (-9.8ft)	kg		*17,460	*17,460	*17,750	12,120	12,510	7,870	8,940	5,790		8,210	5,350	7.98
	lb		*38,490	*38,490	*39,130	26,720	27,580	17,350	19,710	12,760		18,100	11,790	(26.2)
-4.5 m (-14.8ft)	kg		*20,680	*20,680	*15,250	12,440	*11,460	8,100				*9,640	6,910	6.76
	lb		*45,590	*45,590	*33,620	27,430	*25,260	17,860				*21,250	15,230	(22.2)

1. Lifting capacity are based on ISO 10567.

2. Lifting capacity of the Robex Series does not exceed 75% of tipping load with the machine on firm, level ground or 87% of full hydraulic capacity.

3. The Lift-point is bucket pivot mounting pin on the arm(without bucket mass).

4. (*) indicates load limited by hydraulic capacity.