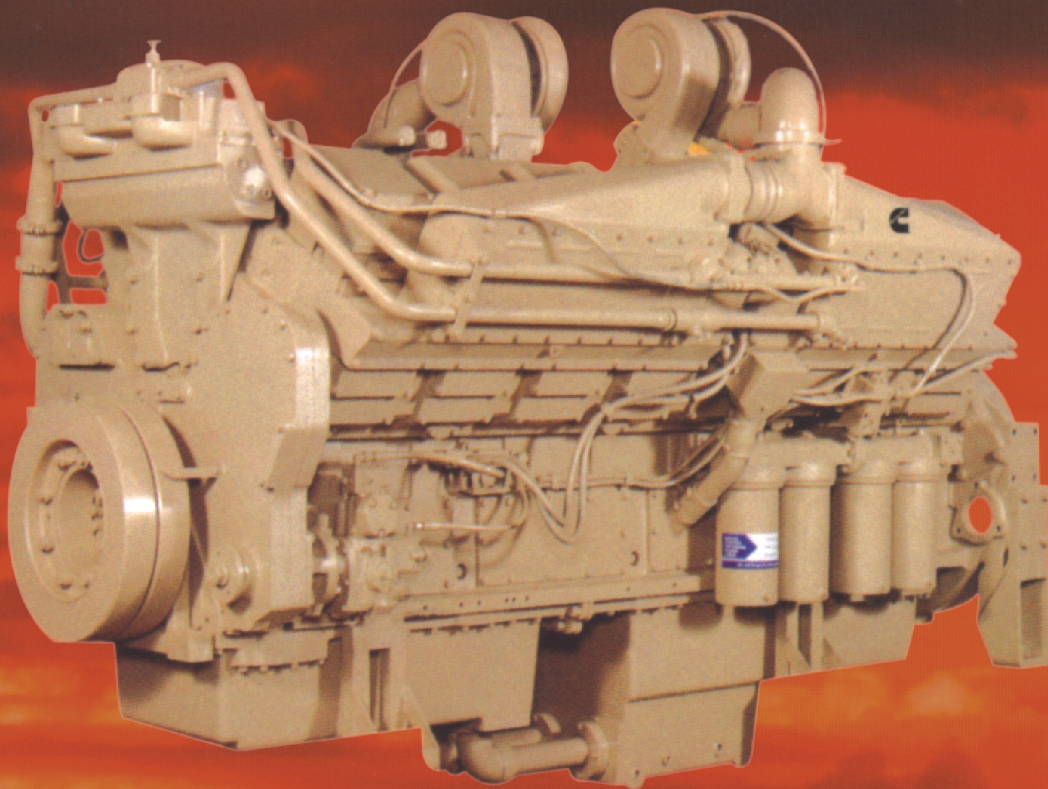




**Sales and
Service
India**

EVERY™ REPAIR. RECON®



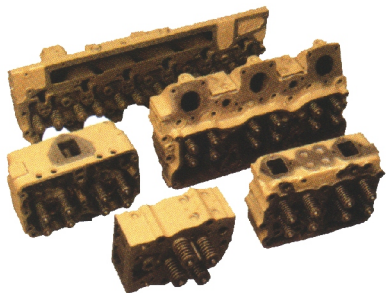
You have options to choose

- ReCon® Engines
- ReCon® Components

On easy Exchange terms

Genuine Value.

Cummins ReCon® Exchange Program was created to satisfy customer demand for genuine Cummins products. The ReCon® exchange program is designed to get your equipment back in operation faster than a local repair or rebuild. ReCon® is a term applied to a component or engine that is restored to factory specifications by the company that originally built your engine. ReCon® Components and Engines are known for their dependability.

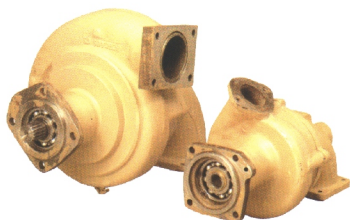


Every Component. Genuine.

Whether you need a Cylinder head for an NT-855, an injector for a 1 MW or any other engine component; look for ReCon® products from Cummins. Your equipment will be up and running with minimal downtime offering you an excellent return on your investment.

Available components include:

- Cylinder heads
- Turbochargers
- Connecting rods
- Water pumps
- Starters & Alternators
- Injectors
- Accessories
- Fuel Pumps



Suitable for B, C, NT-495, NT-743, NT-855, N14, K6, K19, V28/1710, K38, K50 and more.

ReCon® products come from Cummins facilities, specifically equipped to produce products that meet rigorous quality standards. ReCon® Products are available only through Cummins authorized dealer network.

Genuine Quality.

The ReCon® process ensures consistent high quality products. Consistent quality can only be achieved when highly trained people, working in state-of-the-art facilities, follow controlled processes to maintain the strict quality standards Cummins has set. ReCon® products not only adhere to factory specifications, they incorporate the latest advances in materials, component design and manufacturing techniques. That's why Cummins ReCon® Engines and Components provide excellent performance and lasting value in your Cummins powered equipment. 100% Quality. Every Time.



Every Need.

When you're looking for the best in durability, dependability and value, Cummins ReCon® Engines beat the competition in every measure. You'll get peak performance every time.

With ReCon® you get:

- Factory manufacturing standards that meet Cummins performance specifications.
- Worn parts replaced with Genuine Cummins parts.
- Easy core exchange terms that require no disassembly and no "surprises."
- Parts, service and warranty support from the most extensive network in the world.
- ReCon® Components, approved for Cummins Warrant repair.
- High quality and competitively priced products.



Every Question. Answered.

Cummins engines are backed by a wide network of highly skilled service professionals and authorized service dealers. Answers to all your questions are just a phone call away.

Call Toll free no. 1-800-2332000. Log on to www.cumminsIndia.com or email powermaster-india@cummins.com for more information.



35 A/1/2, Erandawana, Pune - 411038. Tel: 91 -20-2543 1234/0066. Fax: 91 -20-2543 9490.
E mail: Powermaster-India@cummins.com, www.cumminsIndia.com



*For BSNL / MTNL lines